

Advanced Placement (AP) Program 2013 Status Report

The Advanced Placement (AP) Program is a partnership comprised of the Miami-Dade County Public Schools' (M-DCPS) Division of Academic Support, the College Board, and the Educational Testing Service (ETS), that provides high-achieving and self-motivated high school students the opportunity to enroll in advanced courses of study and earn college credit and/or advanced placement credit while still enrolled in high school. The Advanced Placement program provides students the opportunity to complete college-level studies in 33 courses in subject areas, including art, government, history, languages, literature, math, music, and science. Students are recommended for college credits if they receive a score of 3 or higher on a 5-point scale on the corresponding AP exam. More than 3,300 universities and colleges worldwide grant college credit or advanced placement to students who have performed satisfactorily on the exams. The amount of credit awarded is determined by the individual policies of the colleges and universities.

Scores on the AP examinations range from 5 to 1 and are interpreted as follows:

- 5 – Extremely Qualified
- 4 – Well Qualified
- 3 – Qualified
- 2 – Possibly Qualified
- 1 – No Recommendation

Admission to AP courses in M-DCPS has traditionally depended upon a record of high academic performance, the *AP Potential* data generated from the results of the PSAT/NMSQT and student interest in the subject. However, many students who may not be achieving high academic marks, but who are motivated, are strongly encouraged to enroll in courses to aim for high educational rigor and to participate in the AP assessment. Having invested a year of hard work and diligent effort on the part of both student and instructor, it is expected that there will be 100% participation in the May AP examinations.

As indicative of the M-DCPS philosophy of inclusion in AP courses and AP exams, it is important to include the scores of 2 when discussing the overall success of an AP program. Although an AP score of 2 is not considered “qualified”, nor is it awarded college credit, the College Board reports that students who receive such scores out-perform fellow students in comparable college classes who had not taken an AP course or exam.

It is incumbent upon school leadership to become involved in what Advanced Placement is and what it can accomplish for all stakeholders and to ensure that AP data are analyzed and used to determine teacher effectiveness and direct instructional focus and students' instructional needs.

Statistical Highlights

- The total number of students participating in at least one AP examination increased by 6.9% from 22,906 in 2012 to 24,503 in 2013.
- The total number of AP examinations taken increased by 4.8% from 41,286 in 2012 to 43,271 in 2013.
- The total number of 3, 4, and 5 scores increased by 9.1% from 17,932 in 2012 to 19,563 in 2013.
- The percent of students scoring 3-5 has increased from 43.4% in May 2012 to 45.2% in 2013.
- During the past six years, the total number of exams taken has increased 52% from 28,472 in May 2007 to 43,271 in 2013.
- During the past six years, the total number of 3, 4, and 5 scores has increased 59.3% from 12,284 in May 2007 to 19,563 in 2013.
- The number of AP courses offered in senior high school increased from 970 in 2011-2012 to 1,001 in 2012-2013.
- The total number of M-DCPS schools with a percentage of 3-5 scores greater than or equal to the M-DCPS 45.2% mean is 30; greater than the Florida 45.8% mean is 29; greater than the Southern Region 51.1% mean is 24; and greater than the Global 59% mean is 14.
- The greatest percentage increase in the number of students scoring 3 or higher is found with the African American subgroup showing a passing rate of 26.9% in May 2013 from 23.1% in May 2012.
- While enrollment in Advanced Placement courses and other Advanced Academic Programs continues to increase, one of the largest increases has been with the Dual Enrollment program. Participation in Dual Enrollment has increased by 49% from 4,801 in 2011-2012 to 7,186 in 2012-2013. The largest increase was with African American and Hispanic subgroups, which increased 49% and 39% respectively.

Advanced Placement (AP) Exam Data Analysis: Race/Ethnicity A Four-Year Study: 2010 to 2013

Table 1.1: Number of students taking at least one AP exam				
Race/Ethnicity	2010	2011	2012	2013
African American	2,957	3,144	2,491	2,548
Hispanic	13,706	14,730	15,303	16,893
White	2,448	2,785	2,952	3,255
Other (includes "not-stated")	2,290	1,639	2,160	1,807
Totals	21,401	22,298	22,906	24,503

- Produced by the Division Academic Support, Advanced Academics
- Data obtained from annual reports generated by the Educational Testing Service (ETS) following the May administration of AP Exams.
- Student racial/ethnic data is self-reported and may differ from M-DCPS official student records.

Table 1.2: % increase of students taking at least one AP exam			
Race/Ethnicity	2012	2013	% +/-
African American	2,491	2,548	+2.3%
Hispanic	15,303	16,893	+10.4%
White	2,952	3,255	+10.3%
Other (includes "not-stated")	2,160	1,807	-16.3%
Totals	22,906	24,503	+6.9%

Greatest increase is with the "Hispanic" student category.

Chart 1.3: Number of students taking at least one AP exam

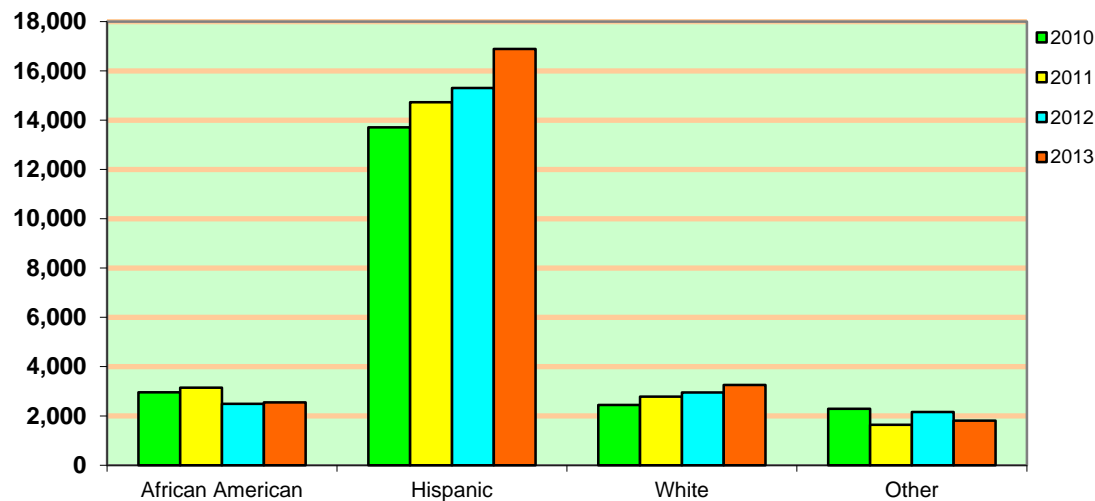
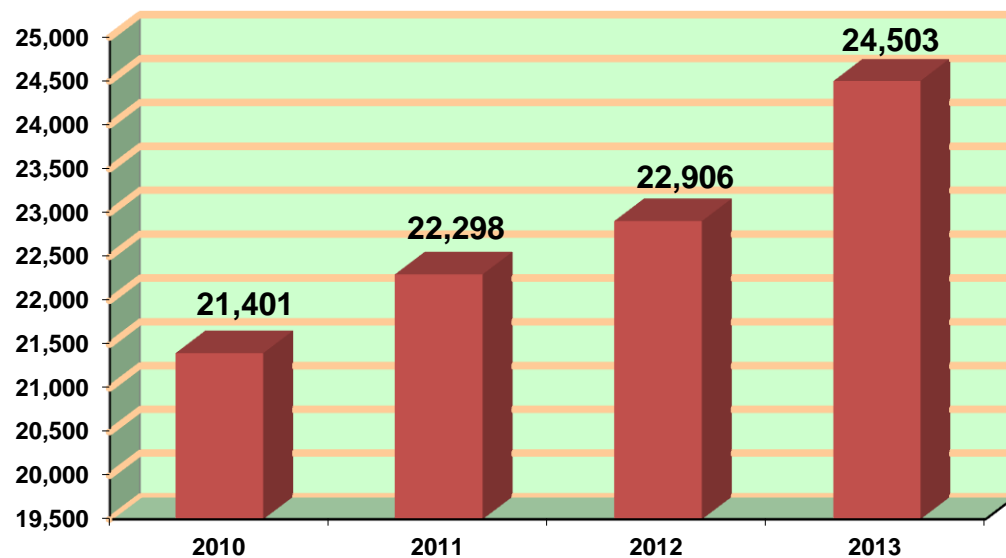


Chart 1.4: TOTAL - Number of students taking at least one AP Exam



Advanced Placement (AP) Exam Data Analysis: Race/Ethnicity A Four-Year Study: 2010 to 2013

Table 2.1: Total number of AP exams administered				
Race/Ethnicity	2010	2011	2012	2013
African American	4,921	5,012	3,977	4,095
Hispanic	24,562	26,051	27,525	29,814
White	4,709	5,255	5,793	5,979
Other (includes "not-stated")	4,614	3,088	3,991	3,383
Totals	38,806	39,406	41,286	43,271

- Produced by the Division of Academic Support, Advanced Academics
- Data obtained from annual reports generated by the Educational Testing Service (ETS) following the May administration of AP Exams.
- Student racial/ethnic data is self-reported and may differ from M-DCPS official student records.

Table 2.2: % increase of total number of AP Exams			
Race/Ethnicity	2012	2013	% +/-
African American	3,977	4,095	+2.9%
Hispanic	27,525	29,814	+8.3%
White	5,793	5,979	+3.2%
Other (includes "not-stated")	3,991	3,383	-15.2%
Totals	41,286	43,271	+4.8%

Greatest increase is with the "Hispanic" student category.

Chart 2.3 Total number of AP exams administered

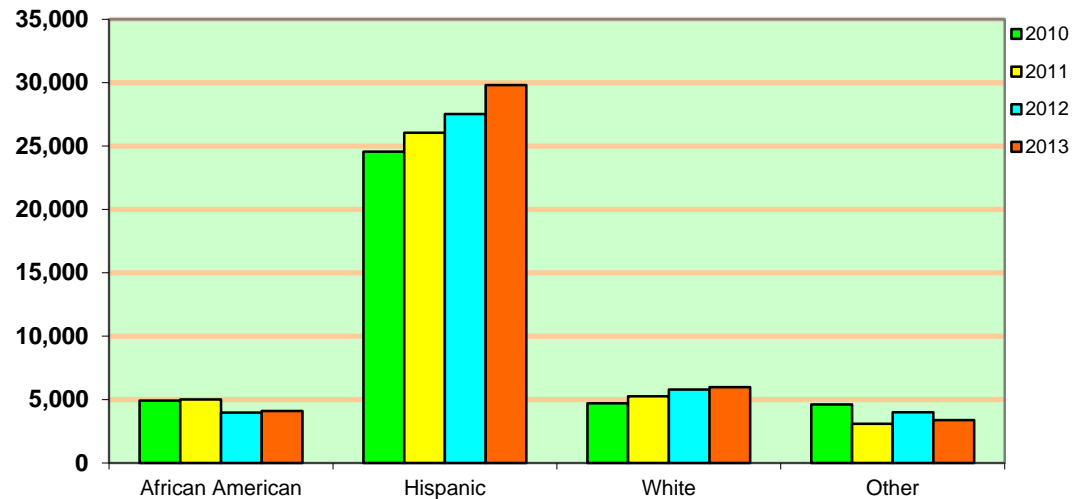
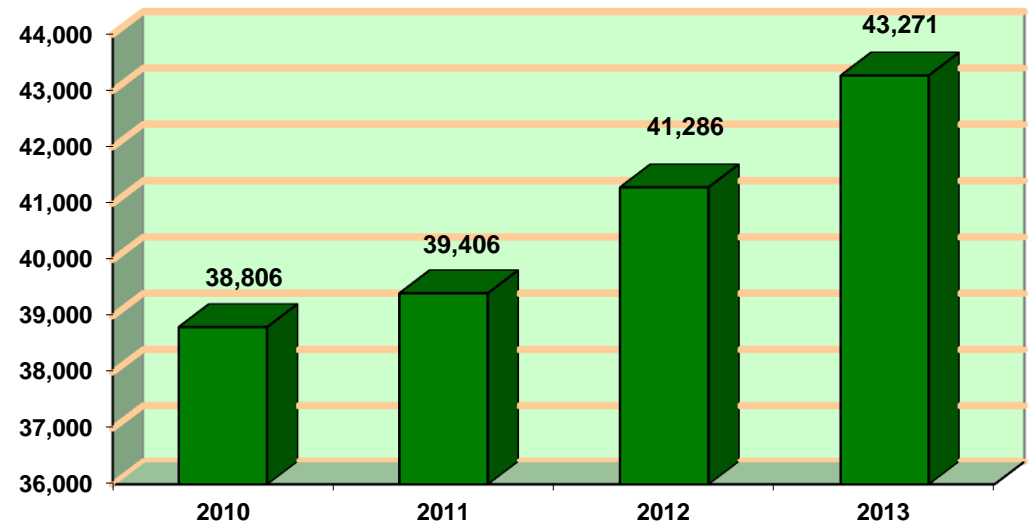


Chart 2.4: TOTAL - Number of AP exams administered



Advanced Placement (AP) Exam Data Analysis: Race/Ethnicity A Four-Year Study: 2010 to 2013

Race/Ethnicity	2010	2011	2012	2013
African American	17.2	18.9	23.1	27.0
Hispanic	40.1	41.8	43.7	45.9
White	52.3	54.7	52.4	52.2
Other (includes "not-stated")	41.1	46.0	48.9	49.1
Totals	38.8%	41.1%	43.4%	45.2%

- Produced by the Division of Academic Support, Advanced Academics
- Data obtained from annual reports generated by the Educational Testing Service (ETS) following the May administration of AP Exams.
- Student racial/ethnic data is self-reported and may differ from M-DCPS official student records.

Race/Ethnicity	2012	2013	% +/-
African American	23.1%	26.9%	+3.8%
Hispanic	43.7%	45.9%	+2.2%
White	52.4%	52.2%	-0.2%
Other (includes "not-stated")	48.9%	49.1%	+0.2%
Totals	43.4%	45.2%	+1.8%

Greatest increase is with the "African American" student category.

Chart 3.3: % of 3, 4, and 5 Scores

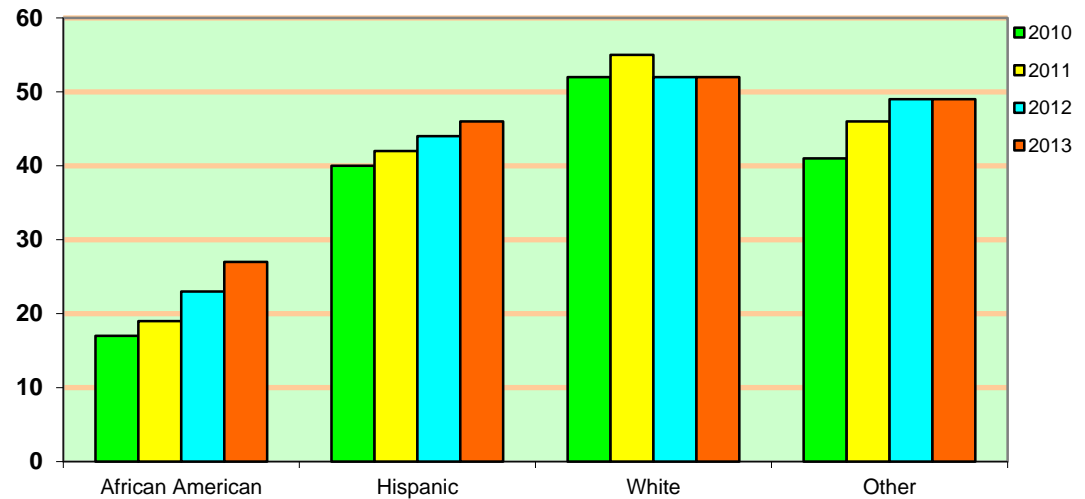
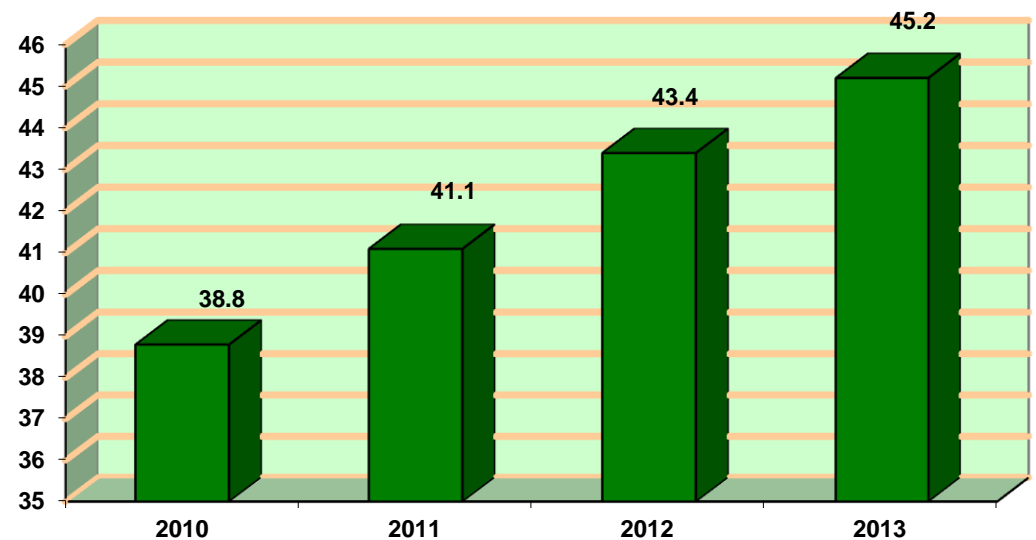


Chart 3.4: TOTAL - % of 3, 4, and 5 Scores



Advanced Placement (AP) Exam Data Analysis: % Increase/Decrease of 3, 4, and 5 Scores A Four-Year Study: 2010 to 2013

Table 4.1: % Point Increase/Decrease of 3, 4, and 5 Scores					
Demographic Area	2010	2011	2012	2013	% +/-
M-DCPS	38.8%	41.1%	43.4%	45.2%	+1.8%
State of Florida	43.5%	42.5%	47.6%	45.8%	-1.8%
Southern Region	50.9%	49.3%	53.3%	51.1%	-2.2%
Global	57.9%	55.7%	59.2%	59.0%	-0.2%

- Produced by the Division of Academic Support, Advanced Academics
- Data obtained from annual reports generated by the Educational Testing Service (ETS) following the May administration of AP Exams

NOTE: M-DCPS passing rate increased, while the Florida, Southern Region, and overall AP passing rate decreased.

Chart 4.2: % Increase/Decrease of 3, 4, and 5 Scores

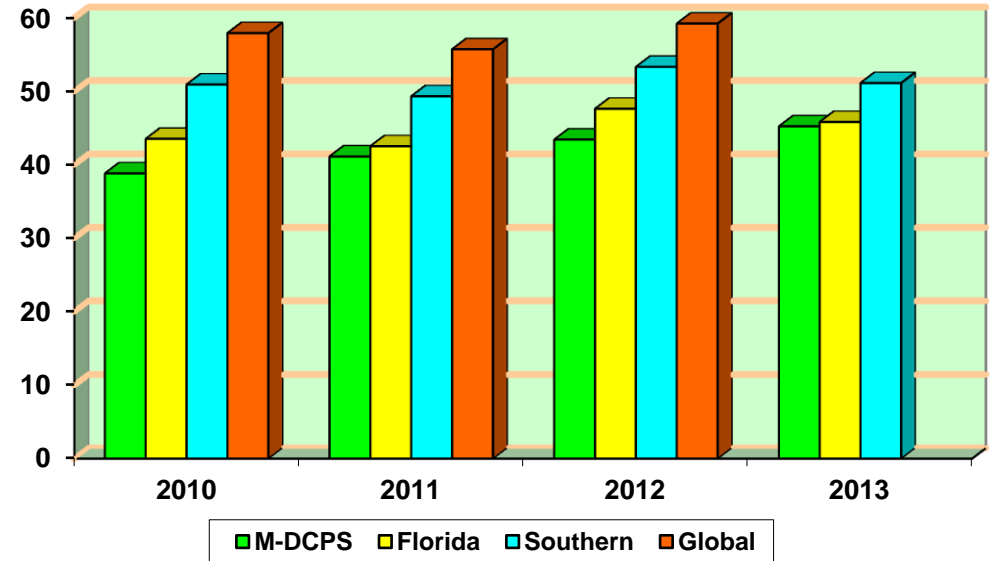
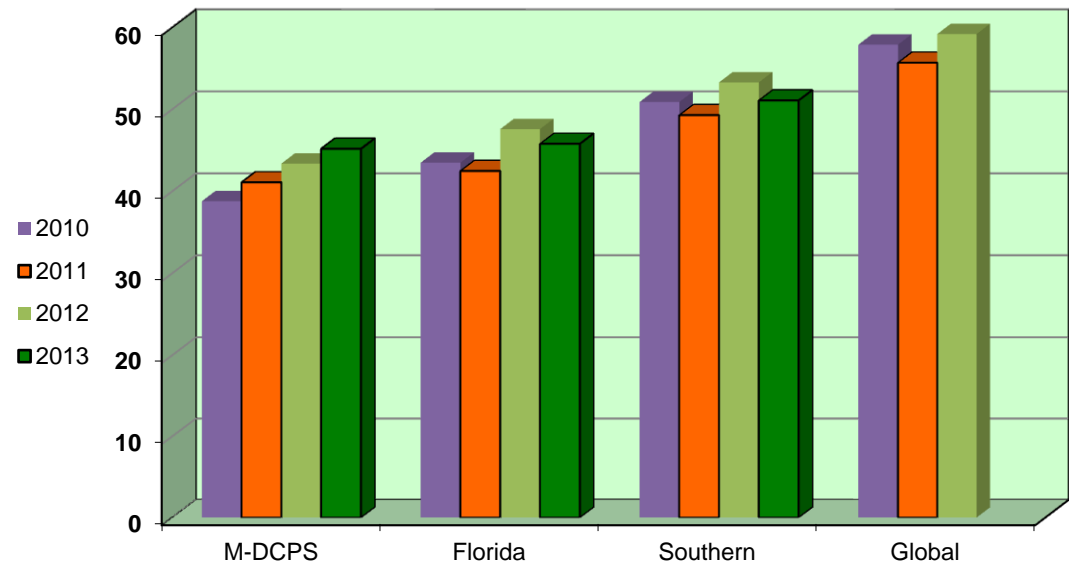


Chart 4.3: % Increase/Decrease of 3, 4, and 5 Scores



**Advanced Placement (AP) Exam Data Analysis: School Distribution of % of 3-5 Scores
A Three-Year Study: 2011 to 2013**

Table 5: School Distribution of % of 3-5 Scores												
Schools	May 2011				May 2012				May 2013			
	Unduplicated AP Enrollment	# of Test Takers	# of AP Exams	% of 3-5 Scores	Unduplicated AP Enrollment	# of Test Takers	# of AP Exams	% of 3-5 Scores	Unduplicated AP Enrollment	# of Test Takers	# of AP Exams	% of 3-5 Scores
Miami-Dade County Public Schools												
Ada Merritt K-8 Center	22	22	22	77.3	42	42	42	95.2	33	33	33	97.0
Alonzo & Traci Mourning SHS	241	237	349	63.0	430	402	693	48.9	418	408	710	56.1
American	286	280	595	17.1	242	166	328	20.4	204	207	425	17.6
Barbara Goleman	283	292	525	32.8	345	253	416	32.7	192	168	199	54.3
BookerT.Washngt	179	174	374	5.3	167	152	271	6.6	107	108	163	23.9
Coral Gables	741	769	1,769	41.7	883	921	2,078	44.3	1,038	1,031	2,179	48.1
Coral Reef	1,636	1,683	3,156	58.2	1,875	1,856	3,546	59.5	1,850	1,899	3,784	57.2
Coral Way K-8	45	45	45	86.7	61	61	61	98.4	60	60	60	95.0
DASH	257	253	376	67.6	236	234	385	82.1	285	288	543	73.7
Dr. Michael M. Krop	590	587	1,323	69.3	558	552	1,279	70.6	563	562	1,278	75.0
Felix Varela	526	540	999	41.1	585	553	977	54.5	650	647	926	59.3
G. H. Braddock	606	602	1,139	25.9	597	589	1,055	31.4	714	701	1,121	36.7
G. W. Carver MS	167	165	165	92.7	191	187	187	95.7	179	179	179	93.9
Hialeah	485	460	808	29.2	415	367	565	42.8	333	312	520	44.4
Hialeah Gardens	354	345	569	26.4	404	297	440	33.6	242	235	324	39.5

Schools	May 2011				May 2012				May 2013			
	Unduplicated AP Enrollment	# of Test Takers	# of AP Exams	% of 3-5 Scores	Unduplicated AP Enrollment	# of Test Takers	# of AP Exams	% of 3-5 Scores	Unduplicated AP Enrollment	# of Test Takers	# of AP Exams	% of 3-5 Scores
Hialeah-Miami Lakes	377	359	584	17.6	402	316	483	26.1	417	316	482	40.0
Homestead	402	396	600	17.2	331	290	365	19.2	213	204	269	20.1
International Studies Prep Acad	-	-	-	-	19	15	17	47.1	92	91	121	52.1
iPrep Academy	30	28	50	30.0	56	51	69	36.2	39	39	43	62.8
John A. Ferguson	823	825	1,430	36.9	869	869	1,676	37.8	781	798	1,436	42.7
Jose Marti MAST	-	-	-	-	-	-	-	-	66	66	77	31.2
Law Enf.Officers Memorial HS	89	89	118	28.8	155	151	224	29.9	148	154	228	45.6
MAST Acad. VK	290	293	632	66.5	351	346	742	65.4	396	391	931	66.1
MAST Acad Hstd	-	-	-	-	30	28	30	20.0	88	86	98	24.5
Miami Beach	772	704	1,313	40.1	856	770	1,492	35.5	881	848	1,588	34.9
Miami Carol City	174	161	212	3.8	133	133	164	12.8	94	91	115	11.3
Miami Central	197	181	259	10.4	142	126	185	13	310	289	391	7.4
Miami Coral Park	605	602	1,036	50.5	678	668	1,230	54.3	615	614	1,155	53.6
Miami Edison	171	165	293	4.1	99	94	168	7.1	119	105	157	7.0
Miami Jackson	245	228	339	8.8	154	135	146	14.4	72	65	67	56.7
Miami Killian	851	872	1,573	43.2	987	942	1,910	40.9	751	783	1,504	36.8
M. Lakes Ed. Ctr	259	262	426	45.5	318	316	649	35	312	329	642	43.9
Miami Norland	350	309	454	3.5	270	250	412	3.6	21	20	20	5.0
M. Northwestern	363	338	544	3.1	137	126	185	14.6	126	138	206	18.9

Schools	May 2011				May 2012				May 2013			
	Unduplicated AP Enrollment	# of Test Takers	# of AP Exams	% of 3-5 Scores	Unduplicated AP Enrollment	# of Test Takers	# of AP Exams	% of 3-5 Scores	Unduplicated AP Enrollment	# of Test Takers	# of AP Exams	% of 3-5 Scores
Miami Palmetto	1,126	1,110	2,473	69.6	1,135	1,116	2,522	64.1	1,144	1,096	2,541	61.8
Miami Senior	616	595	899	35.3	676	633	948	32.6	609	571	750	39.7
Miami Southridge	219	252	373	27.3	176	169	218	24.3	213	173	213	28.6
Miami Springs	325	311	464	35.6	287	292	452	48.2	492	488	738	49.7
Miami Sunset	468	460	922	20.9	524	516	991	23.7	440	434	992	18.3
New World School of Arts	149	165	286	68.9	169	169	275	59.3	148	167	282	63.8
North Miami	448	437	659	11.4	362	297	378	20.9	265	271	374	23.5
N.Miami Beach	383	374	654	28.1	394	357	645	22.2	448	434	796	19.8
Ponce de Leon MS	-	-	-	-	-	-	-	-	7	6	6	83.3
Robert Morgan	578	573	952	32.6	632	615	888	27.7	529	552	730	35.3
Ronald Reagan/Doral	427	417	582	56.5	470	532	701	63.6	646	638	907	55.2
School for Advanced Studies AVERAGE	124	125	312	57.6	129	125	429	54	134	134	334	62.2
SAS - Wolfson	98	99	251	53.0	97	95	349	53	110	110	276	59.1
SAS - North	101	103	265	61.5	103	103	358	55.3	102	102	245	63.3
SAS - South	193	193	489	65.2	211	202	672	50.1	214	215	542	59.0
SAS - Homestead	103	103	243	50.6	104	101	338	57.7	110	110	271	67.2
South Dade	638	633	999	25.7	665	628	1,032	25.6	700	677	1,105	25.7
South Miami	378	386	688	45.1	402	396	663	42.1	427	430	752	39.9
Southwest Miami	764	748	1,425	47.0	706	698	1,256	48.2	786	774	1,436	47.4

Schools	May 2011				May 2012				May 2013			
	Unduplicated AP Enrollment	# of Test Takers	# of AP Exams	% of 3-5 Scores	Unduplicated AP Enrollment	# of Test Takers	# of AP Exams	% of 3-5 Scores	Unduplicated AP Enrollment	# of Test Takers	# of AP Exams	% of 3-5 Scores
TERRA Envrnmtl. Research	262	262	271	54.2	756	747	1,073	49.9	1,051	1,049	1,883	42.7
Westland Hialeah	374	318	407	51.1	351	337	433	49.9	493	504	664	51.2
William Turner Tech	248	236	347	15.6	233	221	289	18.7	270	266	414	8.9
Young Men's Prep	43	43	58	6.9	32	24	31	25.8	12	11	12	41.7
Young Women's Prep	111	111	257	20.6	113	113	259	29.7	135	135	282	31.6
Charter Schools												
Academy of Arts & Minds (7022)	185	185	319	32.9	173	148	245	23.7	98	96	161	28.6
Archimedian Upper Conservtry (7265)	78	77	136	58.0	122	119	275	56	140	139	335	62.4
City of Hialeah Edctn. Acad. (7262)	43	43	66	41.0	108	108	180	33.3	132	133	230	27.0
Doctor's Charter (6040)	75	74	116	42.2	75	74	99	53.5	78	81	121	43.0
Doral Academy Chartr. HS (7020)	321	309	429	57.1	444	436	634	44	555	548	790	53.8
Doral Performing Arts Acad. (7009)	37	54	69	53.6	152	146	221	41.2	196	197	280	53.2
International Studies (7007)	189	174	274	61.7	179	162	272	66.2	157	165	278	62.2
Keys Gate Charter (7050)	-	-	-	-	41	42	42	9.5	216	214	233	8.6
Lawrence Academy Chrtr (7036)	6	5	5	0	42	41	100	17	13	16	29	6.9
Mater Academy Mid/HS Charter (7160) & (7014)	673	682	1,447	30.5	836	839	1,642	31.9	872	895	1,747	27.9
Mater Academy East Charter HS (7037), Charter Middle (6009), & HS of Int.Stud (7024)	100	98	156	46.2	127	130	193	38.9	138	138	235	40.4

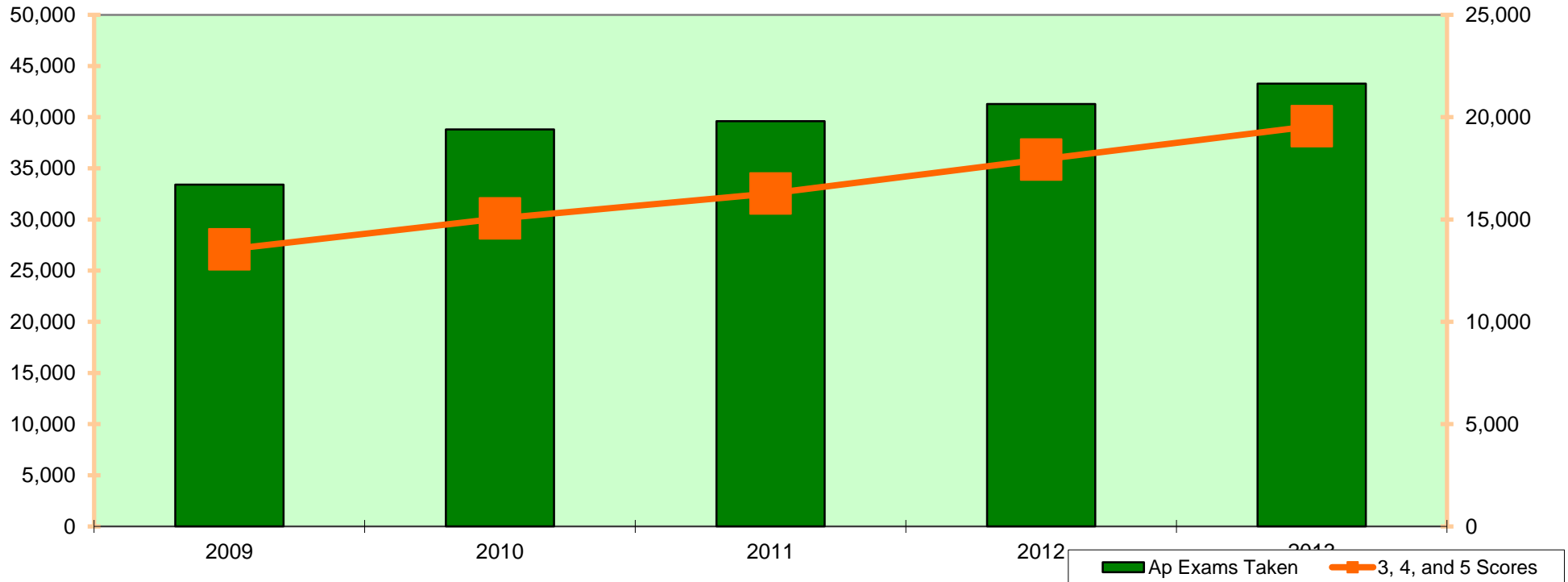
Schools	May 2011				May 2012				May 2013			
	Unduplicated AP Enrollment	# of Test Takers	# of AP Exams	% of 3-5 Scores	Unduplicated AP Enrollment	# of Test Takers	# of AP Exams	% of 3-5 Scores	Unduplicated AP Enrollment	# of Test Takers	# of AP Exams	% of 3-5 Scores
Mater Lakes Academy HS (7018)	182	158	260	37.3	248	212	325	45.8	224	209	371	46.4
Miami Arts Charter (7059)	77	49	17	25.0	60	57	72	41.7	63	62	82	48.8
Miami Community Charter HS (7058)	44	6	6	0	7	17	17	0	-	-	-	-
Pinecrest Prep Acad.Ch HS (7053)	51	54	56	39.3	40	41	58	43.1	87	83	113	40.7
Somerset Acad. Charter HS (7042) & (7038-S)	112	110	135	30.4	135	129	157	31.2	168	167	304	18.4
District Totals	23,219	22,327	39,406	41.1	24,019	22,944	41,286	43.4	24,980	24,503	43,271	45.2

- Produced by the Division of Academic Support, Advanced Academic Programs
- Data obtained as follows:
- Unduplicated AP enrollment data taken from ITS Report Product No. T13110601, Term 2, Annual Enrollment.
- Number of test takers and number of AP Exams data taken from the College Board's On-line Score Reporting - *AP District Summary by School and AP Current Year Score Summary* reports for Miami-Dade County Public Schools.
- Percent of 3-5 scores data calculated from the College Board's On-line Score Reporting - *AP Current Year Score Summary* report for Miami-Dade County Public Schools.

Advanced Placement (AP) Exam Data Analysis: A Five-Year Score Report 2009 to 2013

Table 6: Five-Year Score Report					
Total number of:	2009	2010	2011	2012	2013
AP Exams taken	33,406	38,806	39,610	41,286	43,271
3, 4, and 5 scores	13,544	15,056	16,271	17,932	19,563

Chart 6.1: Five-Year Score Report



Advanced Placement (AP) Exam Data Analysis: Percent (%) of Student Exam Participation

A Three-Year Study: 2011 to 2013

Table 7: Percent (%) of Student Exam Participation

School	% of Student Exam AP Participation			School	% of Student Exam AP Participation			School	% of Student Exam AP Participation		
	'11	'12	'13		'11	'12	'13		'11	'12	'13
Academy of Arts & Minds (Charter 7022)	100	86	98	International Studies Prep Acad	-	79	99	Miami Senior	97	94	94
Ada Merritt K-8 Center	100	100	100	iPreparatory Academy	93	91	100	Miami Southridge	115	96	81
Alonzo & Traci Mourning	98	93	98	Keys Gate Charter (7050)	-	102	99	Miami Springs	96	102	99
American	98	69	101	Krop, Dr. Michael M.	99	99	99	Miami Sunset	98	98	99
Archim. Upper Cons. Acad.	99	98	99	Lawrence Acad Ch (7036)	83	98	123	Morgan, Robert Ed.	99	97	104
Braddock, G. Holmes	99	99	98	Law Enforcement Officers	100	97	104	New World School of the Arts	111	100	113
Carver, G. W. Middle	99	98	100	MAST Academy – Virginia Key	101	99	99	North Miami	98	82	102
City of Hialeah Education Acad	100	100	101	MAST Academy – Homestead	-	100	98	North Miami Beach	98	91	97
Coral Gables	104	104	99	Mater Academy (Charter 7160 & 7014)	101	100	103	Pinecrest Prep Academy	106	103	95
Coral Reef	103	99	103	Mater Academy East Charter HS (6009,7024,7037)	98	102	100	Ponce de Leon MS	-	-	86
Coral Way K-8	100	100	100	Mater Lakes Academy (7018)	87	85	93	Ronald Reagan/Doral	98	113	99
DASH	98	99	101	Miami Arts Charter (7059)	64	95	98	School for Advanced Studies	101	97	100
Doctor's Charter (6040)	98	99	104	Miami Beach	91	90	96	Somerset Academy	98	96	99
Doral Academy (Charter 7020)	96	98	99	Miami Carol City	93	100	97	South Dade	99	94	97
Doral Performing Arts (7009)	146	96	101	Miami Central	92	89	93	South Miami	102	99	101
Ferguson, John A.	100	100	102	Miami Community Charter (7058)	14	100	-	Southwest	98	99	98
Goleman, Barbara	103	73	88	Miami Coral Park	99	99	99	TERRA Environmental	100	99	99
Hialeah	95	88	94	Miami Edison	96	95	88	Turner, W. H. Tech.	95	95	99
Hialeah Gardens	97	74	97	Miami Jackson	93	88	90	Varela, Felix	103	95	99
Hialeah-Miami Lakes	95	79	76	Miami Killian	102	95	104	Washington, Booker T.	97	91	100
Homestead	99	88	96	Miami Lakes Ed. Center	101	99	105	Westland Hialeah	85	96	102
International Studies (7007)	92	91	105	Miami Norland	88	93	95	Young Men's Prep	100	75	92
Jose Marti MAST 6-12	-	-	100	Miami Northwestern	93	92	110	Young Women's Prep	100	100	100
				Miami Palmetto	99	98	96				

Advanced Placement (AP) Exam Data Analysis: 2013 Comparison of Schools Performing Above Mean

Table 8: Comparison of Schools Performing Above Mean							
Schools with % of 3-5 scores greater than or equal to the 45.2 <u>M-DCPS</u> Mean		Schools with % of 3-5 scores greater than the 45.8 <u>Florida</u> Mean		Schools with % of 3-5 scores greater than the 51.1 <u>Southern</u> Mean		Schools with % of 3-5 scores greater than the 59.0 <u>Global</u> Mean	
School	%	School	%	School	%	School	%
Ada Merritt K-8 Center	97.0	Ada Merritt K-8 Center	97.0	Ada Merritt K-8 Center	97.0	Ada Merritt K-8 Center	97.0
Alonzo & Tracy Mourning	56.1	Alonzo & Tracy Mourning	56.1	Alonzo & Tracy Mourning	56.1	Archimedean Upper Consvtr	62.4
Archimedean Upper Consvtr	62.4	Archimedean Upper Consvtr	62.4	Archimedean Upper Consvtr	62.4	Carver, G. W. Middle	93.9
Barbara Goleman	54.3	Barbara Goleman	54.3	Barbara Goleman	54.3	Coral Way K-8	95.0
Carver, G. W. Middle	93.9	Carver, G. W. Middle	93.9	Carver, G. W. Middle	93.9	DASH	73.7
Coral Gables Sr.	48.1	Coral Gables Sr.	48.1	Coral Reef	57.2	Felix Varela	59.3
Coral Reef	57.2	Coral Reef	57.2	Coral Way K-8	95.0	International Studies Ch (7007)	62.2
Coral Way K-8	95.0	Coral Way K-8	95.0	DASH	73.7	iPrep Academy	62.8
DASH	73.7	DASH	73.7	Doral Academy Ch. (7020)	53.8	Krop, Dr. Michael, M.	75.0
Doral Academy Ch. (7020)	53.8	Doral Academy Ch. (7020)	53.8	Doral Perf. Arts Acad(7009)	53.2	MAST Academy	66.1
Doral Perf. Arts Acad(7009)	53.2	Doral Perf. Arts Acad(7009)	53.2	Felix Varela	59.3	Miami Palmetto	61.8
Felix Varela	59.3	Felix Varela	59.3	International Studies Ch (7007)	62.2	New World School of the Arts	63.8
International Studies Ch (7007)	62.2	International Studies Ch (7007)	62.2	International Studies Prep Acad	52.1	Ponce de Leon MS	83.3
International Studies Prep Acad	52.1	International Studies Prep Acad	52.1	iPrep Academy	62.8	School for Advanced Studies	62.2
iPrep Academy	62.8	iPrep Academy	62.8	Krop, Dr. Michael, M.	75.0		
Krop, Dr. Michael, M.	75.0	Krop, Dr. Michael, M.	75.0	MAST Academy	66.1		
Law Enfrmnt. Offcrs. Memorial	45.6	MAST Academy	66.1	Miami Coral Park	53.6		
MAST Academy	66.1	Mater Lakes Acad. HS (7018)	46.4	Miami Jackson	56.7		
Mater Lakes Acad. HS (7018)	46.4	Miami Arts Charter (7059)	48.8	Miami Palmetto	61.8		
Miami Arts Charter (7059)	48.8	Miami Coral Park	53.6	New World School of the Arts	63.8		
Miami Coral Park	53.6	Miami Jackson	56.7	Ponce de Leon MS	83.3		
Miami Jackson	56.7	Miami Palmetto	61.8	Ronald Reagan/Doral	55.2		
Miami Palmetto	61.8	Miami Springs	49.7	School for Advanced Studies	62.2		
Miami Springs	49.7	New World School of the Arts	63.8	Westland Hialeah	51.2		
New World School of the Arts	63.8	Ponce de Leon MS	83.3				
Ponce de Leon MS	83.3	Ronald Reagan/Doral	55.2				
Ronald Reagan/Doral	55.2	School for Advanced Studies	62.2				
School for Advanced Studies	62.2	Southwest Miami	47.4				
Southwest Miami	47.4	Westland Hialeah	51.2				
Westland Hialeah	51.2						

Recommendations

- Continuation of an increase in core Advanced Placement (AP) courses to ensure equal and equitable access throughout the District.
- Participation in AP examination administration to all students, 100%, in AP courses.
- Analysis by schools of AP data in order to make appropriate decisions regarding staffing, training, and resources needed to increase participation and improve performance.
- Continued professional development for secondary administrators, counselors, test chairpersons, and teachers with special emphasis on the College Board's AP Fall Counselor's Workshop, the M-DCPS' Fall AP Teacher Curriculum Review and Spring AP Student Curriculum Review, and the Pre-AP Workshops for teachers of honors and advanced students in middle and high schools.
- Increased assistance to administrators in the utilization of the College Board's *AP Potential*.
- Expansion of the *AP Mentor/Mentee Program* for AP teachers that will ensure appropriate training and support.
- Ensure the continued offering of the *Fall AP Teacher Curriculum Review* during each school year to ensure appropriate teacher programmatic and pacing support.
- Ensure the continued offering of the *Spring AP Student Curriculum Review* during each school year prior to the administration of the May AP exams. For the SY 2013-2014, a *Fall AP Student Curriculum Review* will be held in order to better prepare students.
- Ensure the continued submission of AP Syllabi by new AP teachers to the College Board for AP course approval.
- Presentations throughout the District to continue creating awareness of Advanced Academic programs available to students.
- Maintain abreast of future changes and modifications to the AP Curricular requirements for different AP courses and assist AP teachers in modifying their AP syllabi as mandated by the College Board organization.